



Where the results matter most®

**2ND ANNUAL
ADDITIONAL TESTING GOLF TOURNAMENT
BROOKVIEW GOLF CLUB,
GOLDEN VALLEY, MN
SATURDAY, SEPT. 25TH, 2004
TEE TIMES BEGIN AT 12:00PM
SEE REGISTRATION FORM ON PAGE 3
DEADLINE TO REGISTER, SEPT. 17TH, 2004**

**Dude, you driving?
DWI?**

**Get a 2nd opinion, call Additional Testing, Inc. for your
2nd test.**

612-333-3226 or 866-333-3226

Take the test that stands up in court— BLOOD

Double-checking never hurts

In this issue:

- Marketing Ad
- 2nd Annual ATI Golf Tournament
- NEW phone numbers for Roslyn and Fax
- Support Breast Cancer Research
- Hair testing MYTHS (continued)
- Coverage Areas
- Why did the Chicken cross the road?
- Internet humor



Our Products & Services:

Our New program:

THE PARENTAL EDGE®

Additional Testing Inc. is referred by many local high schools, both public and private.

All information is held strictly confidential with the parents unless it may be a situation warrants the information being shared.

Home Testing kits available-call now.

On the lighter side, from the internet:



“You don’t look anything like the long haired, skinny kid I married 25 years ago. I need a DNA sample to make sure it’s still you.”

Hair Testing-Myths

1. In order to detect drug use in a hair test, the drug needs to have been ingested. Test results for hair tests are significantly smaller values and in order to be present or positive in a hair test, ingestion is typically required. Unless an individual inhales a significant amount of 2nd hand smoke, of any kind, it has been our experience that the test will be negative, despite exposure.
2. When collecting hair for a hair test, it **MUST** be cut from the donor directly. Submitting hair from another source does not indicate which end is from the scalp vs. the distal end of the hair.
3. Hair tests should be analyzed by **ONLY** a SAMSHA approved laboratory.
4. Hair testing is **not hair follicle testing**. The follicle is the white colored tag at the end of the hair that was in the scalp. Hair testing literally tests the hair, preferably, the 3 inches closest to the scalp-the most recent growth.

What is the cost of a hair test? \$200

What drugs can you test for? Amphetamines

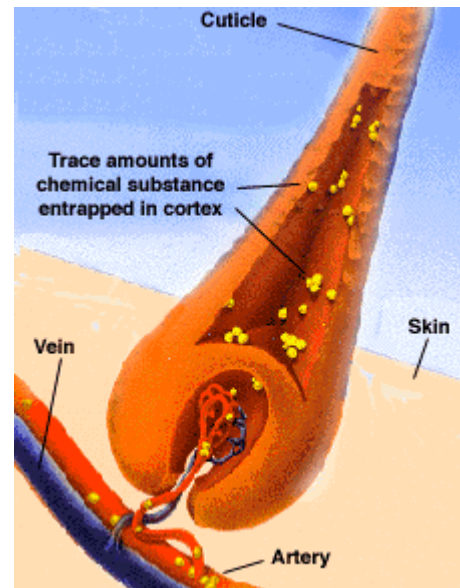


Illustration of Human Hair

Illustration of human hair found at:
www.psychemedics.com



For a complete listing, including photographs of our products & services, please point your browser to the following address: <http://www.additionaltesting.com/serv.html>



2ND ANNUAL
ADDITIONAL TESTING GOLF TOURNAMENT
HAS MOVED TO:
BROOKVIEW GOLF COURSE
GOLDEN VALLEY, MINNESOTA
SATURDAY, SEPTEMBER 25TH, 2004
TEE TIMES START AT NOON

Come join us on the links for a scramble event and stay for a Burger & Chicken Buffet Dinner with Cash Bar.



Prizes will be determined on best scramble score by foursome 1st, 2nd, and 3rd place. Closest to the Pin, Longest Drive and Longest Putt for Men & Women.

Return this form with your check or charge information to:

Additional Testing, Inc., 2233 Hamline Ave. N. # 504, Roseville, MN 55113

Or fax to 651-631-0074.

For questions, contact Roslyn Paterson, at 651-631-0573 or by email at RoslynRN@aol.com

Make checks payable to Additional Testing, Inc.

For more information regarding Additional Testing, please see our website at: www.additionaltesting.com

Proceeds benefit the Muscular Dystrophy Association of America. www.mdausa.org



Players: 1. _____ 2. _____

3. _____ 4. _____

The \$90 registration fee includes: 18 holes, cart, dinner and prizes. \$ _____

Method of payment: AMEX VISA MASTERCARD DISCOVER (circle one)

Credit Card #: _____ Exp. Date: _____
(Credit cards will be charged a 3% service fee)

Registration deadline: September 17th, 2004



**Additional Testing, Inc.™
Monthly Newsletter–Page**

Collection Site Office Hours:
M-F 9:00PM-5:00PM

Contact information:
Roslyn Paterson, BSN, RN
President/CEO
Office: 651-631-0573
Fax: 651-631-0074
Email: RoslynRN@aol.com
www.additionaltesting.com

2233 Hamline Ave N #504
Roseville, MN 55113

ATI has DUI coverage in the following MN counties: 43!

Aitkin	Anoka	Beltrami	Benton	Blue Earth
Brown	Carlton	Carver	Chisago	Crow Wing
Dakota	Dodge	Faribault	Freeborn	Goodhue
Hennepin	Isanti	Kanabec	Kandiyohi	Le Sueur
McLeod	Meeker	Mille Lacs	Morrison	Mower
Nicollet	Olmsted	Pine	Ramsey	Renville
Rice	Scott	Sherburne	Sibley	St. Louis
Stearns	Steele	Wabasha	Waseca	Washington
Watonwan	Winona	Wright		

ATI expects to cover the following counties in 2004:
Ottetail, Polk, Becker, and Douglas.

Subject: Points of view

Why did the chicken cross the road?

GEORGE W BUSH : We don't really care why the chicken crossed the road. We just want to know if the chicken is on our side of the road, or not. The chicken is either against us, or for us. There is no middle ground here.

JOHN KERRY : Although I voted to let the chicken cross the road, I am now against it!

JOHN LENNON : Imagine all the chickens in the world crossing roads together - in peace.

AL GORE : I invented the chicken!

COLONEL SANDERS : Did I miss one?



DUI Alcohol Test	\$300.00
Chemical Health Assessments	\$140.00
Retesting States Evidence-Initial Retainer (new pricing)	\$200.00
Digital Alcohol Detector	\$100.00

How community supports Breast Cancer Research:

From 3M's website:

“An Easy Way to Help

Every year, thousands of our mothers, sisters, daughters, grandmothers and friends are affected by breast cancer. 3M, the maker of Post-it® Super Sticky Notes, has joined together with the City of Hope Cancer Center to help bring us closer to changing the course of breast cancer forever.”

3M Corporation is building the World's Largest Pink Ribbon; in Times Square for breast cancer awareness month in October. For every person who clicks on this link and signs up, Post-It will donate \$1 to breast cancer research and place a Post-It® in their name on the billboard.

It's effortless, please support this program. Please sign up and pass along!

http://www.3m.com/us/office/postit/research/largest_pink_ribbon.jhtml