

# ADDITIONAL TESTING, INC.® MONTHLY NEWSLETTER

Volume 2, Issue 8

November 2004



24 HOUR DISPATCHER 612-333-3226

Where the results matter most®

<http://www.jointogether.org/sa/news/summaries/reader/0,1854,574690,00.html>

## Meth Moves from Parties to the Workplace

9/22/2004

Methamphetamine, once known as a party drug, is steadily making its way into the workplace. A growing number of overworked and stressed employees are using the drug to increase concentration and stamina, the [Los Angeles Times](#) reported Sept. 13.

"There is too much meth out there to explain this away as a party drug," said Dr. Richard Rawson, associate director of UCLA's Integrated Substance Abuse Programs, who has studied methamphetamines for more than a decade.

According to researchers, meth is most common on construction sites and in manufacturing plants, where workers must stay alert during long hours of repetitive work. Use of the drug is also growing in the entertainment, sales, retail, and legal professions.

"A lot of people look at this like it's No Doz -- just another way to keep them awake and on message," said Nancy Delogu, a Washington, D.C. attorney and an expert in workplace substance misuse.

According to a study conducted this summer by Quest Diagnostics Inc., which processes more than 7 million employee drug tests a year, the number of workers testing positive for meth increased 68 percent last year.

The drug's low cost, about \$100 a month, makes it affordable for many workers. However, the accidents, absenteeism, and health costs associated with meth are becoming costly for businesses. Preliminary findings of research examining the economic impact of meth use in Benton County, Ark., finds that meth use cost employers \$21 million last year, or \$42,000 per affected worker.

"Employers are going to be surprised what this drug can mean to their bottom line," said study author Katherine Deck, associate director of the Center for Business and Economic Research at the University of Arkansas.

Despite the growing cost to businesses, many companies are doing little to address the problem. As a result, the U.S. Occupational Safety and Health Administration has begun providing training materials to help employers recognize symptoms of the drug's use. In addition, the agency includes information about meth on its website.

"As this becomes a longer trend, we are definitely growing more worried," said Dr. Don Wright, director of occupational medicine at the agency.

### In this issue:

- Marketing Ad
- Drug testing cases from the internet
- NEW phone numbers for Roslyn and Fax
- Meth moves from party to workplace
- Hair testing MYTHS (continued)
- Coverage Areas
- Do you have hair testing questions?
- Internet humor



## Our Products & Services:

Our New program:

### **THE PARENTAL EDGE®**

Additional Testing Inc. is referred by many local high schools, both public and private.

All information is held strictly confidential with the parents unless it may be a situation warrants the information being shared.

**Home Testing kits available-call now.**

## Hair Testing-Myths

1. In order to detect drug use in a hair test, the drug needs to have been ingested. Test results for hair tests are significantly smaller values and in order to be present or positive in a hair test, ingestion is typically required. Unless an individual inhales a significant amount of 2nd hand smoke, of any kind, it has been our experience that the test will be negative, despite exposure.
2. When collecting hair for a hair test, it **MUST** be cut from the donor directly. Submitting hair from another source does not indicate which end is from the scalp vs. the distal end of the hair.
3. Hair tests should be analyzed by **ONLY** a SAMSHA approved laboratory.
4. Hair testing is **not hair follicle testing**. The follicle is the white colored tag at the end of the hair that was in the scalp. Hair testing literally tests the hair, preferably, the 3 inches closest to the scalp-the most recent growth.

**What is the cost of a hair test?** \$200 \*

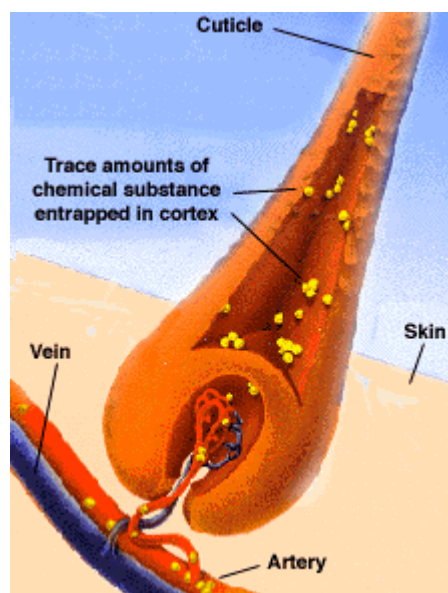
**What drugs can you test for?** Amphetamines (including Methamphetamine and Ecstasy) Cocaine, Marijuana, Opiates and PCP and more.

Do you have any pending cases where a hair test could make or break the case?

What other questions are your clients cases demanding regarding hair testing?

Please submit your questions to Roslyn Paterson at:

RoslynRN@aol.com as a visit to the Quest Diagnostics Hair Testing Laboratory will be on November 11th, 2004.



**Illustration of Human Hair**

Illustration of human hair found at:  
[www.psychemedics.com](http://www.psychemedics.com)



For a complete listing, including photographs of our products & services, please point your browser to the following address: <http://www.additionaltesting.com/serv.html>

## UPS Barred Employee from Taking Medication, Lawsuit Alleges

Monday, August 16, 2004

A former employee accuses the United Parcel Service of forcing her to choose between her job and the prescription drugs she was using to treat anxiety and depression. (8/16)

The employee, Darlene E. Veltri, says in a lawsuit filed in federal court in Pittsburgh that she was prescribed low dosages of Xanax to treat chronic anxiety and clinical depression in 1999. She also underwent a 30-day treatment program for alcohol addiction in 2000.

Before letting her return to work, UPS first required Veltri to disclose her prescription medications and then required her to stop taking the Xanax, calling it an inappropriate drug for a recovering alcoholic, according to the lawsuit. Not taking the drug went against the advice of her physician, the suit adds.

In January 2003, a company drug test turned up Xanax in Veltri's system, leading to her dismissal, according to the lawsuit.

Joining Veltri in filing the suit on August 4 was an activist group, the American Association of People with Disabilities. They accuse UPS of creating a hostile work environment and harassing her on the basis of disability.

In fact, the suit also requests class-action status for various groups of UPS employees:

- those in an Employee Assistance Program who had to disclose what prescription medicines they take;
- workers made to supply urine samples that were tested for legal prescription drugs;
- workers the company prohibited from using physician-prescribed medicines;
- workers fired for using those prescriptions; *and*
- workers subjected to a hostile work environment for using prescribed medicines.

The association and Veltri are seeking lost pay and benefits, along with compensatory damages, on her behalf and other unnamed employees who don't perform "safety-sensitive" jobs like driving.

Malcolm Berkley, a spokesman for UPS in Atlanta, told the Associated Press that the company would not comment on the suit. But he added that UPS has an anti-discrimination policy and wasn't unfair to anyone with a disability.

WE'VE MOVED!



**Additional Testing, Inc.®  
Monthly Newsletter**

Collection Site Office Hours:  
M-F 9:00PM-5:00PM

Contact information:  
**Roslyn Paterson, BSN, RN**  
President/CEO  
Office: 651-631-0573  
Fax: 651-631-0074  
**Email: RoslynRN@aol.com**  
www.additionaltesting.com

2233 Hamline Ave N #504  
Roseville, MN 55113

**ATI has DUI coverage in the following MN counties: 43!**

Aitkin	Anoka	Beltrami	Benton	Blue Earth
Brown	Carlton	Carver	Chisago	Crow Wing
Dakota	Dodge	Faribault	Freeborn	Goodhue
Hennepin	Isanti	Kanabec	Kandiyohi	Le Sueur
McLeod	Meeker	Mille Lacs	Morrison	Mower
Nicollet	Olmsted	Pine	Ramsey	Renville
Rice	Scott	Sherburne	Sibley	St. Louis
Stearns	Steele	Wabasha	Waseca	Washington
Watonwan	Winona	Wright		

ATI expects to cover the following counties in 2004:  
Ottertail, Polk, Becker, and Douglas.

**Personal update:**

On August 28th, I began having new back pain, unlike pains I've suffered in the past. This time, the pain shot all the way down my right leg to mid-calf. I was later diagnosed with 2 bulging disks, at L4-L5, with nerve root impingement aka: sciatica. You may have noticed my absence in the office, by phone or email. In September, I averaged working about 2 hours a day. In October, that number has increased to 3-5 hours a day. I am on strong pain medication daily and limited walking and sitting. Last week, I completed the 3 out of 3 cortisone injections to the nerve root and am seeing modest improvement. The next step if there is no resolution to the pain is spinal fusion. I have been told that I must give up my favorite form of recreation, GOLF as that may have caused the damage. I am willing to stop golfing for now, especially as the season is over, but am going to do everything possible to get back on the links again come spring. Throughout this period, my administrative assistant, Mary Ohnesorge, has been working solo and long hours, for which I am grateful. I am planning to work most afternoons until I am able to manage a full day. I do monitor my



<b>DUI Alcohol Test</b>	<b>\$300.00</b>
<b>Chemical Health Assessments</b>	<b>\$140.00</b>
<b>Retesting States Evidence-Initial Retainer</b> (new pricing)	<b>\$200.00</b>
<b>Digital Alcohol Detector</b>	<b>\$100.00</b>

**Dude, you driving?  
DWI?**

**Get a 2nd opinion, call Additional Testing, Inc. for your  
2nd test.**

**612-333-3226 or 866-333-3226**

**Take the test that stands up in court– BLOOD**

**Double-checking never hurts**